

EAST ANGLIA

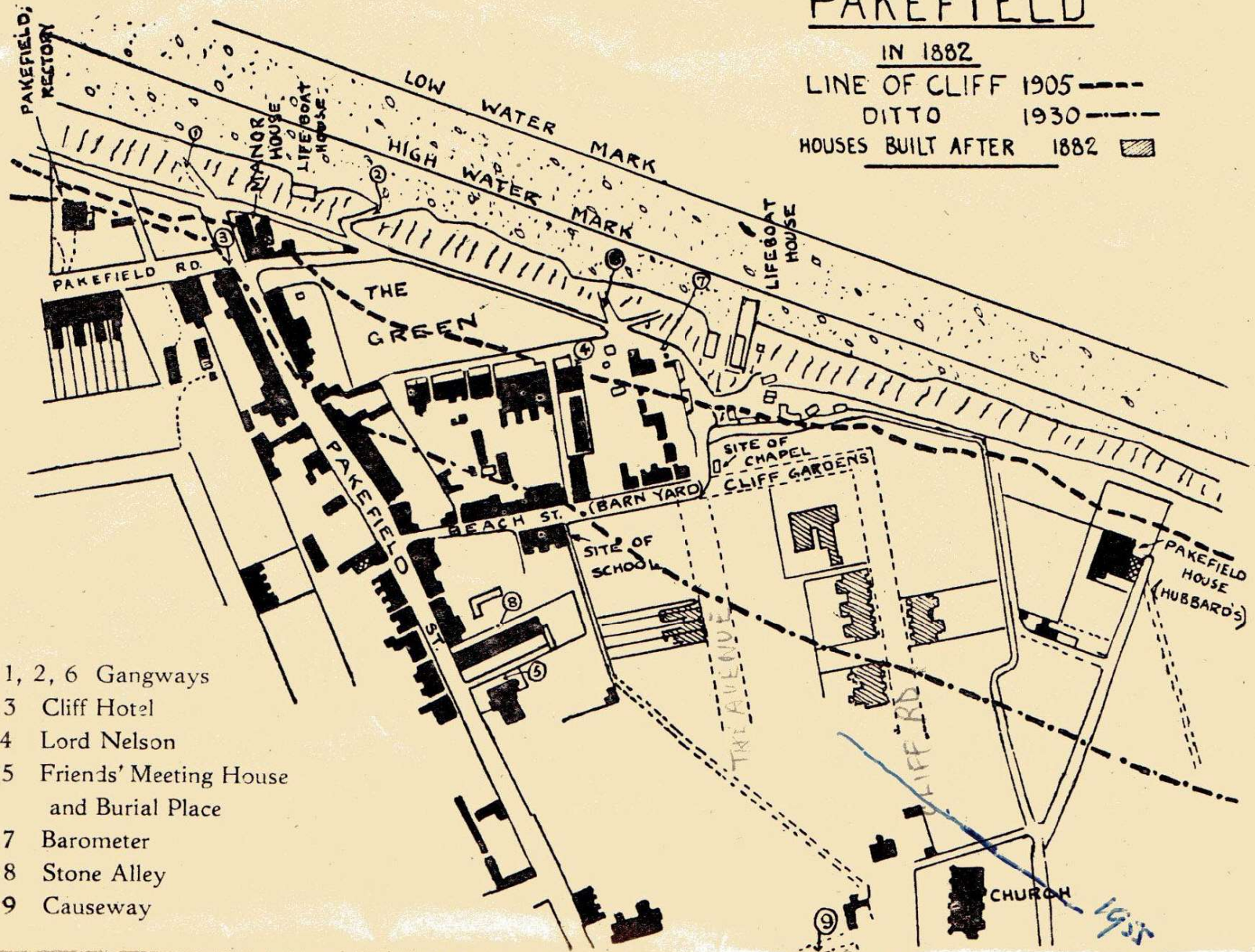
Recente vondsten ten gevolge van kustafslag [als inleiding]



PAKEFIELD

IN 1882

LINE OF CLIFF 1905 - - - -
 DITTO 1930 - · - · -
 HOUSES BUILT AFTER 1882 

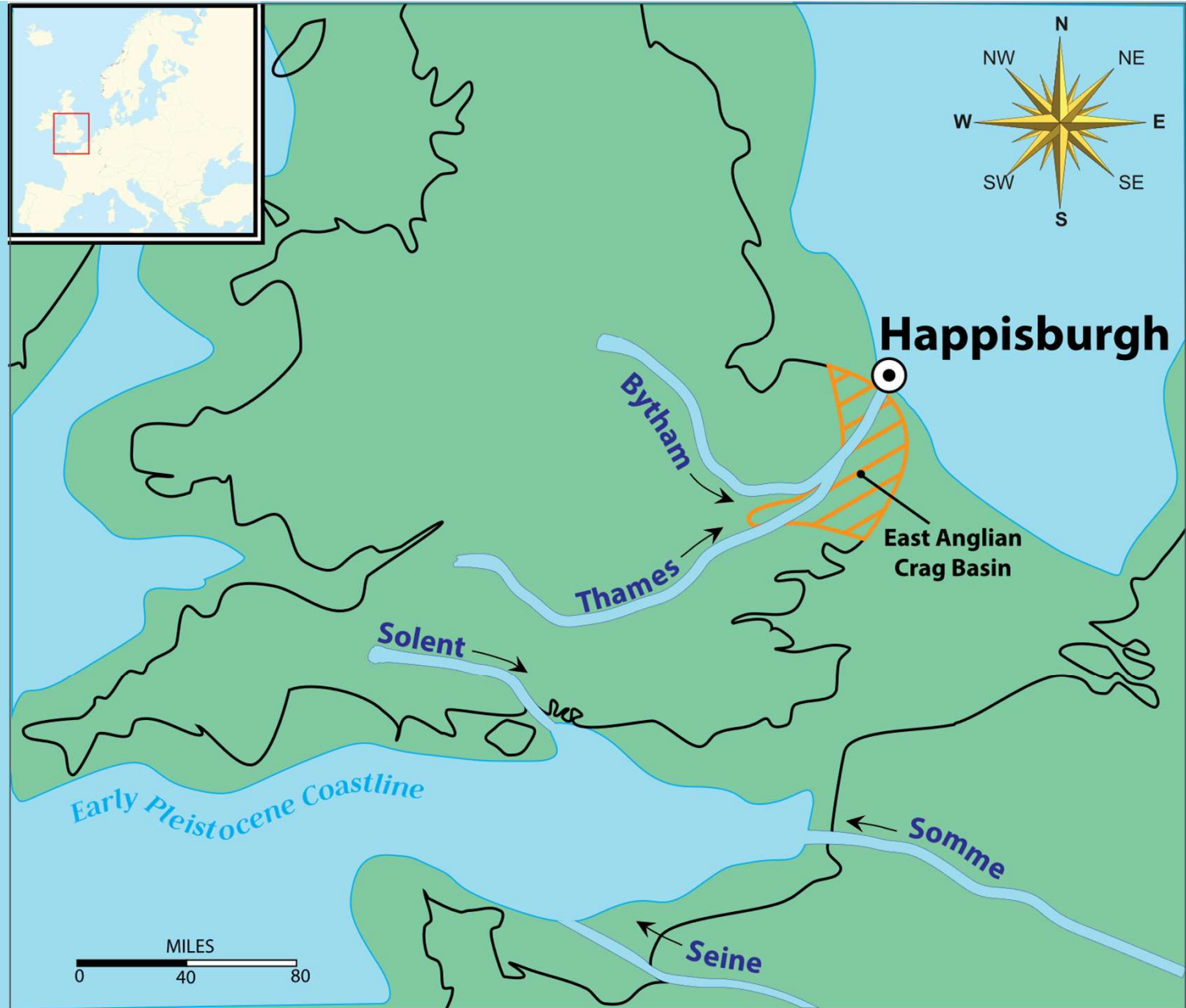


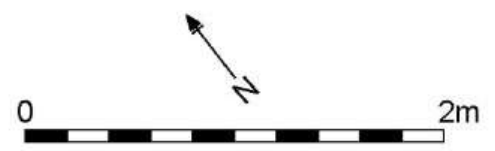
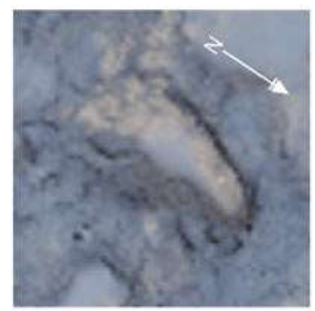
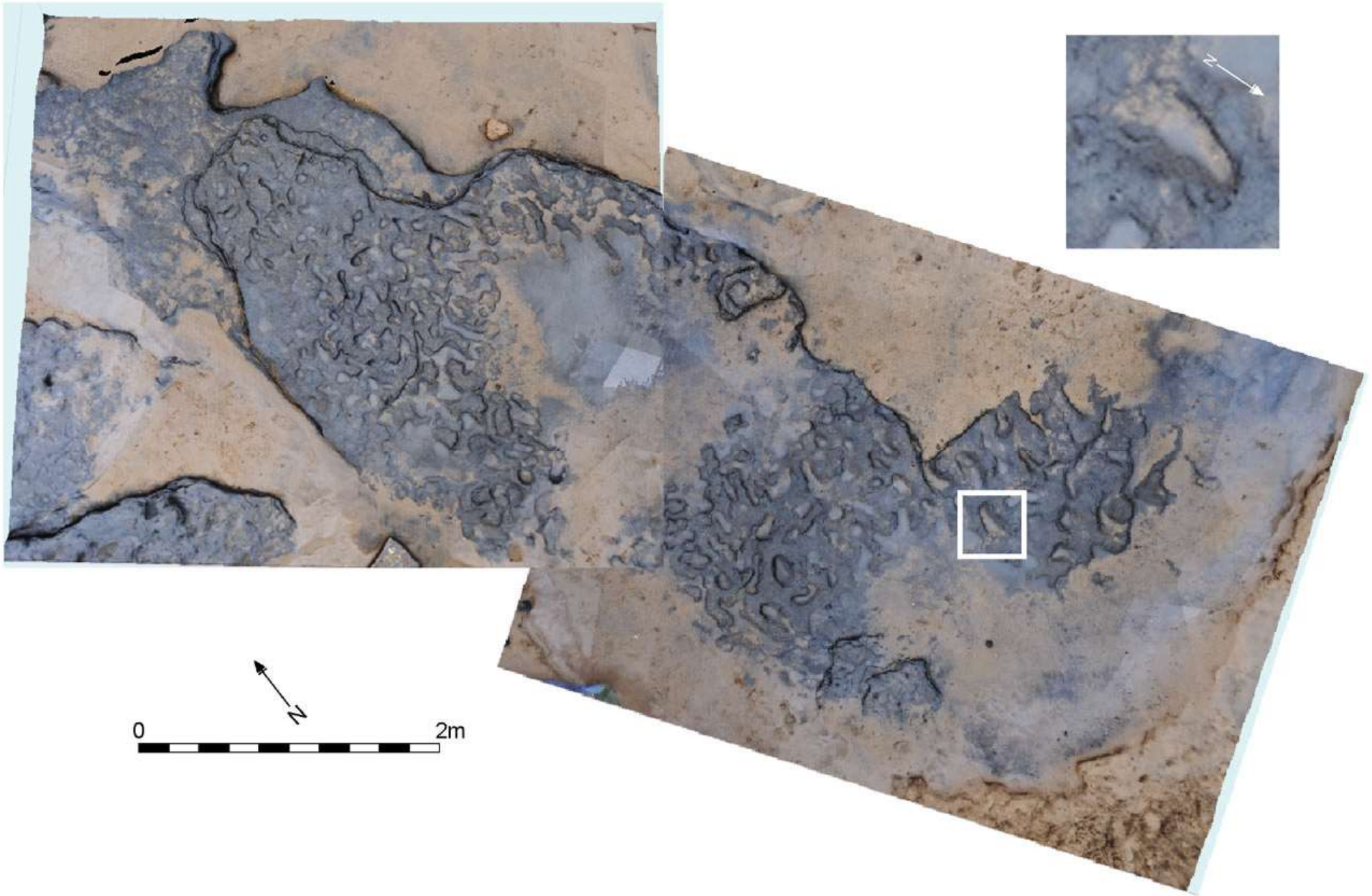
- 1, 2, 6 Gangways
- 3 Cliff Hotel
- 4 Lord Nelson
- 5 Friends' Meeting House
and Burial Place
- 7 Barometer
- 8 Stone Alley
- 9 Causeway

N NATURAL
HISTORY
MUSEUM



De situatie voorafgaand aan het Anglian [cf. Elster ijstijd] waarbij East Anglia goeddeels onder het ijs kwam te liggen. Door de achterblijvende morene heeft de Theems haar loop verlegd.





Na kustafslag blootgespoelde
voetafdrukken in (fossiele)
modder. Drie maten en dieptes.
Een gezin?





700.000 jaar

Seahenge





Kapdatum

2049 vC

Fotogrammetrie
kasporen

metalen bijl







nu begint het echt

(naar) EAST ANGLIA

17 - 22 mei 2023





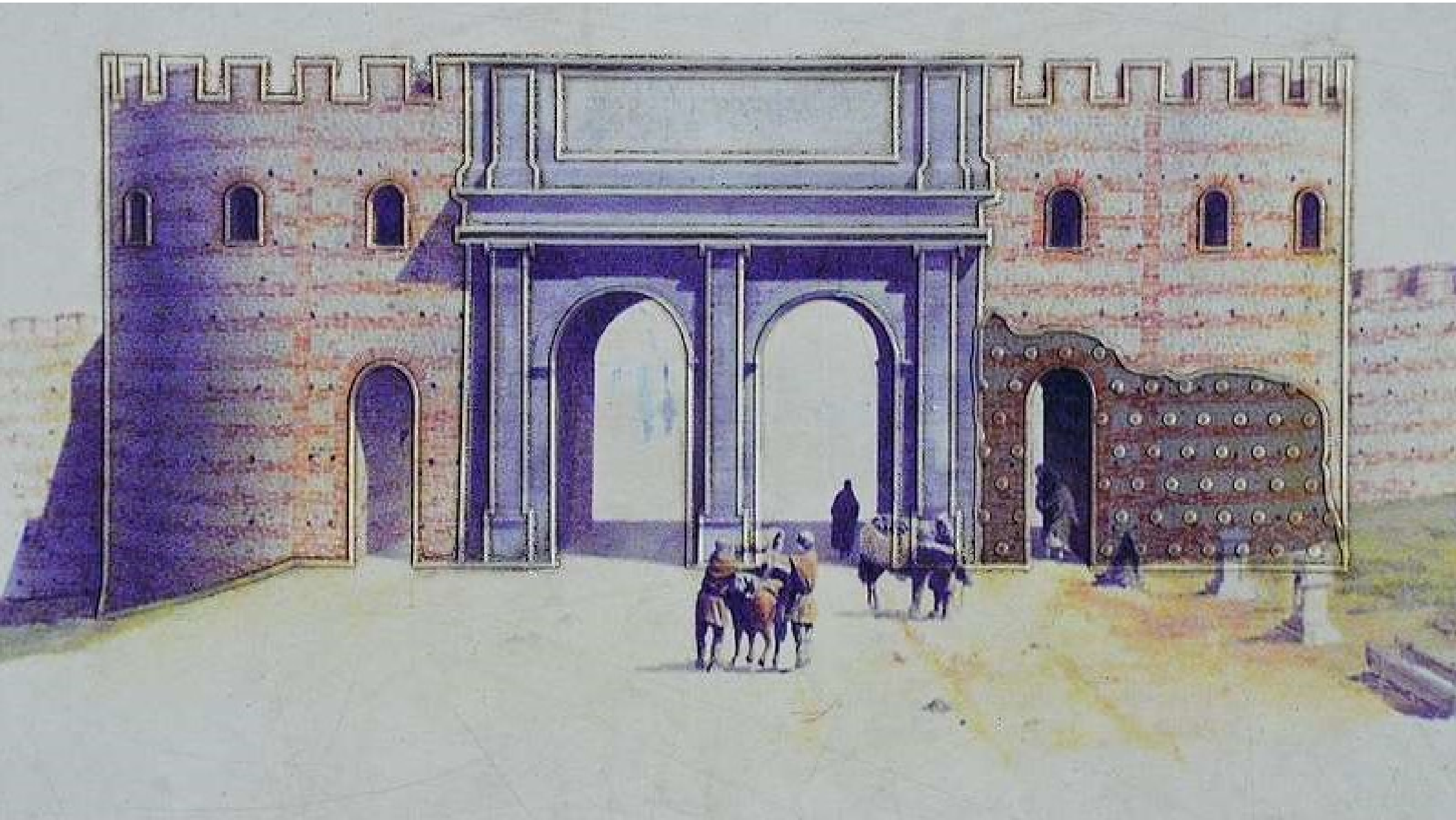
We verblijven
in hotels bij
Colchester (1
nacht) en in
Norwich (3
nachten)

Dragonfly hotel op een kwartier met de bus ten noorden van Colchester



COLCHESTER De eerste Romeinse nederzetting. Restanten van de keltische fortificatie zijn verdwenen onder Romeinse resten. Hier een blik op resten van de stadspoort vanaf de stadszijde: Balkerne Gate.





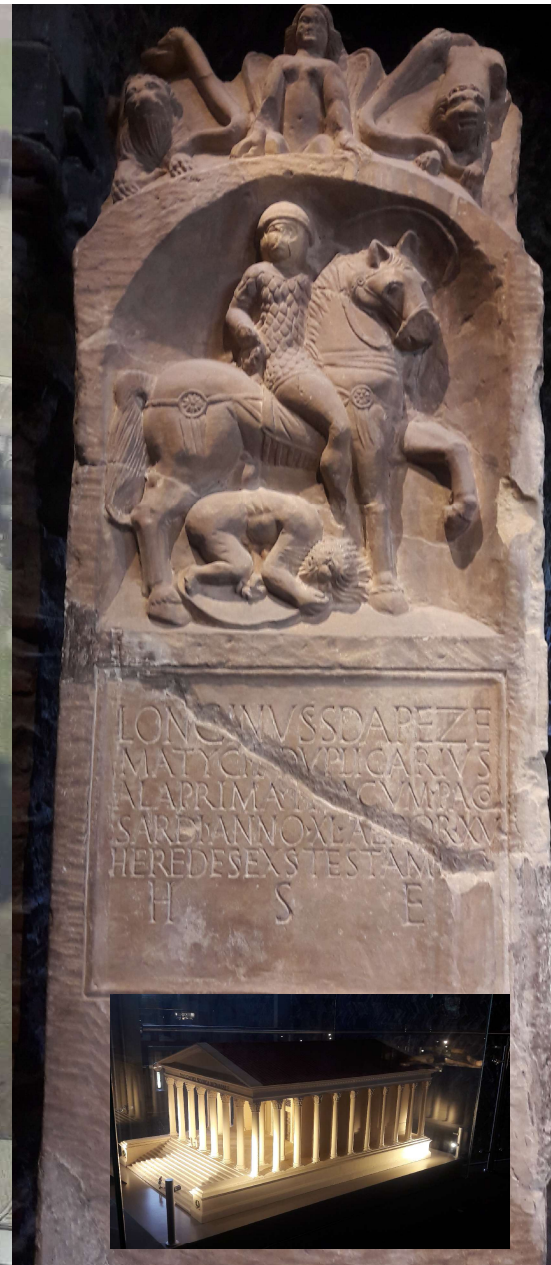




De Norman burcht werd gebouwd op het podium van de romeinse tempel en is tegenwoordig museum.



Reconstruction showing Colchester Castle in 1157





Law banned the burial of the dead
in the same areas along
the coast. Extensive areas were set aside
for burials.

1 **Gray face pots**
These pots were used to hold
cremation burials and are associated
with the Roman army.

2 **Found at Stanwell Street**
(Great Britain)

3 **Lead coffin**
The lead coffin contained the
remains of a man, found
at Caerwent, Wales.

4 **The tomb**
The lead coffin contained the
remains of a man, found
at Caerwent, Wales.

5 **Lead coffin**
The lead coffin contained the
remains of a man, found
at Caerwent, Wales.

6 **Gray face pots**
These pots were used to hold
cremation burials and are associated
with the Roman army.

7 **Gray face pots**
These pots were used to hold
cremation burials and are associated
with the Roman army.

8 **Gray face pots**
These pots were used to hold
cremation burials and are associated
with the Roman army.

9 **Gray face pots**
These pots were used to hold
cremation burials and are associated
with the Roman army.

10 **Gray face pots**
These pots were used to hold
cremation burials and are associated
with the Roman army.

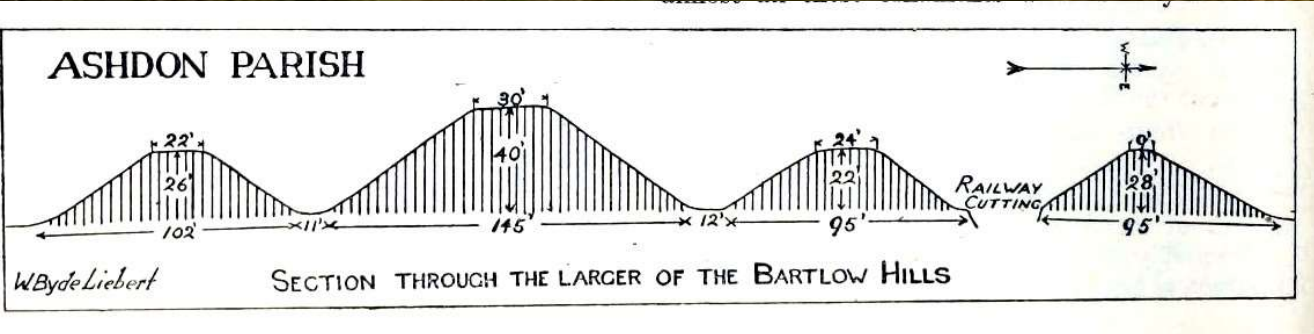
WEST MERSEA

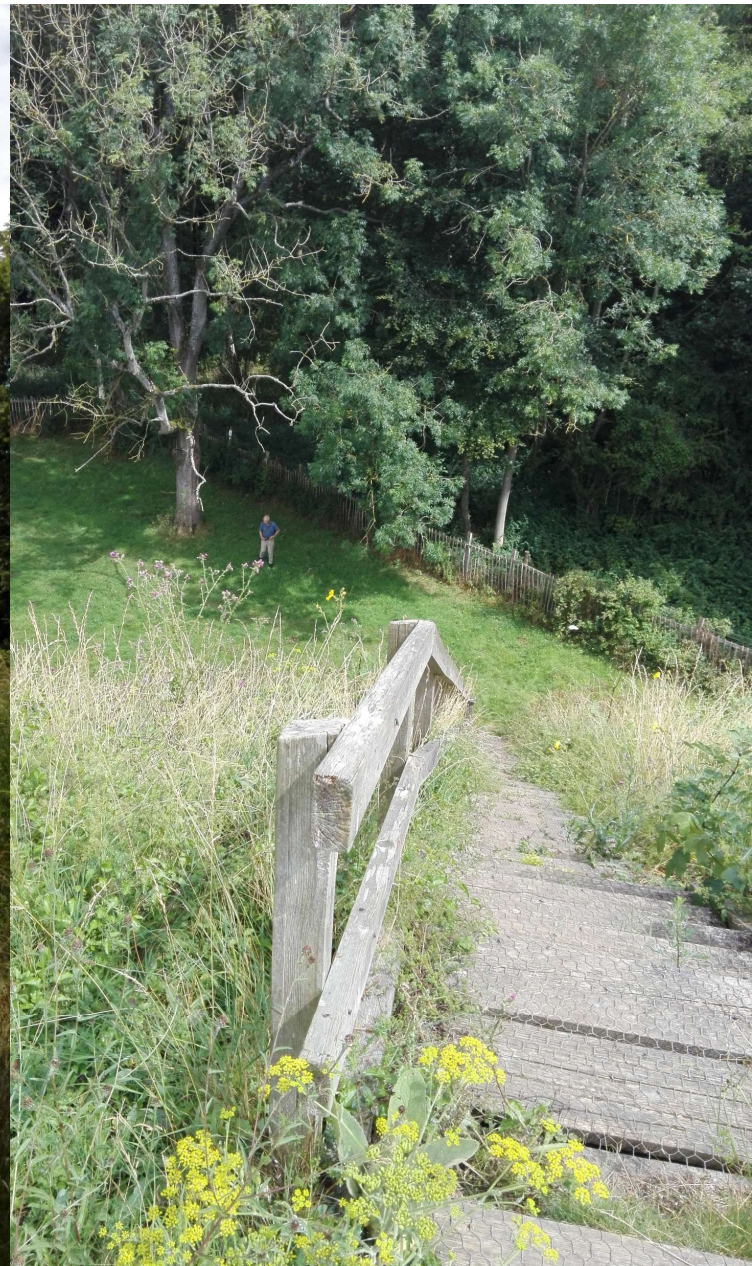
romano-britse grafheuvel

We gaan er omheen, op en IN.



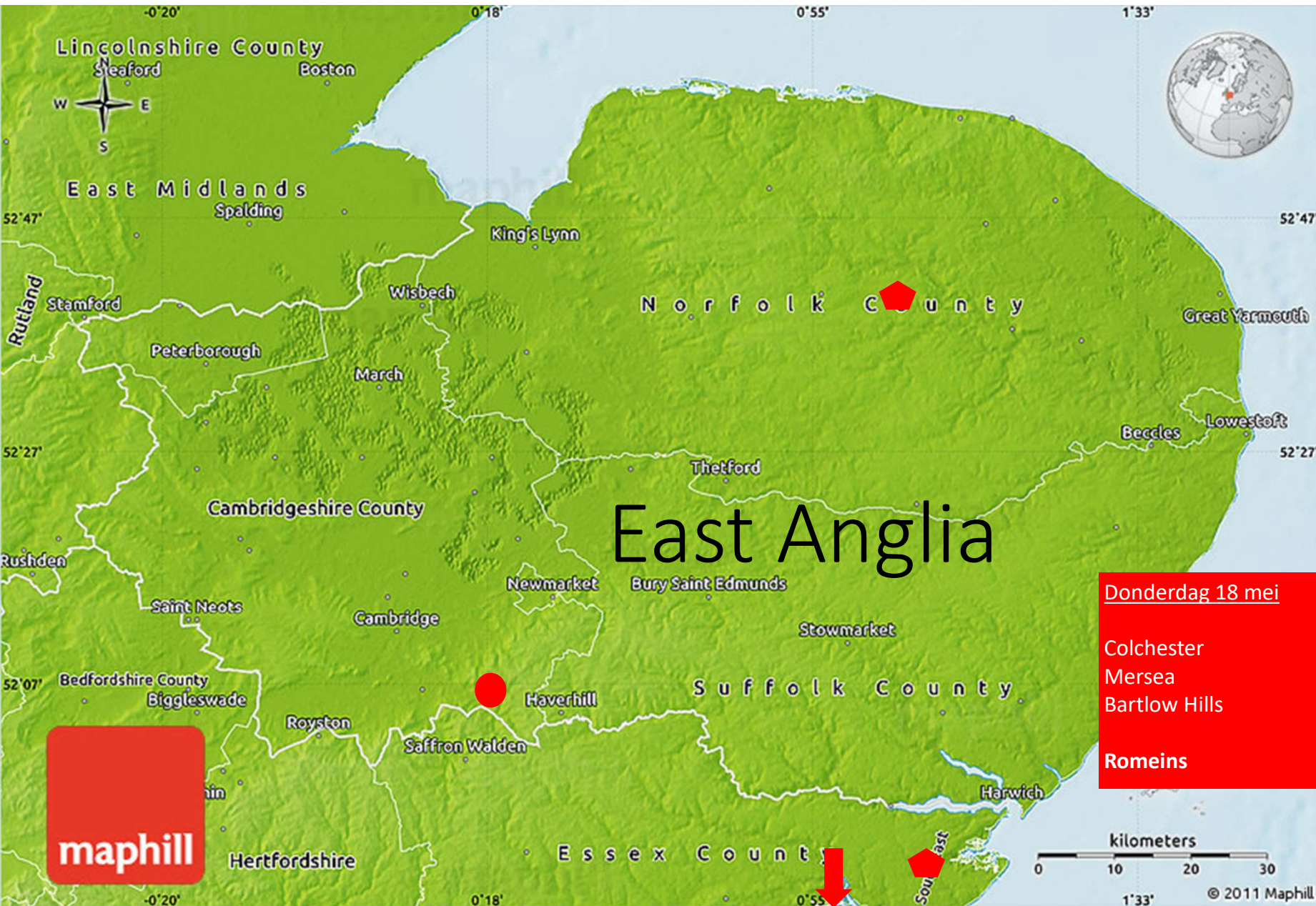
BARTLOW Romeinse grafheuvels





The George hotel in een lommerrijke buitenwijk aan de
zuidkant van Norwich

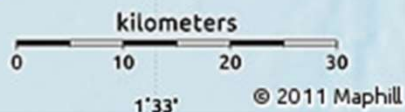




Donderdag 18 mei

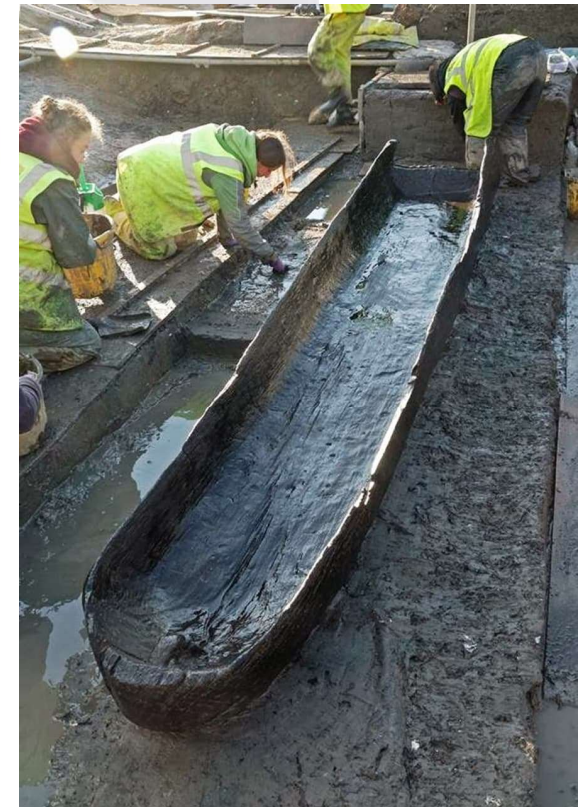
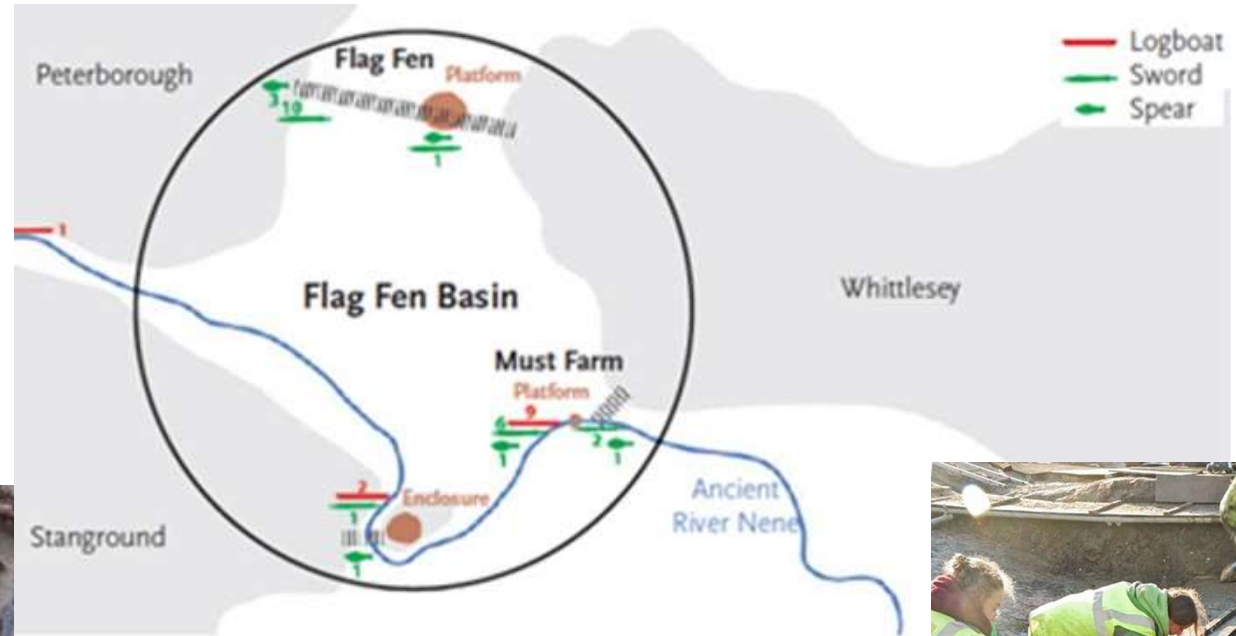
Colchester
Mersea
Bartlow Hills

Romeins Norwich

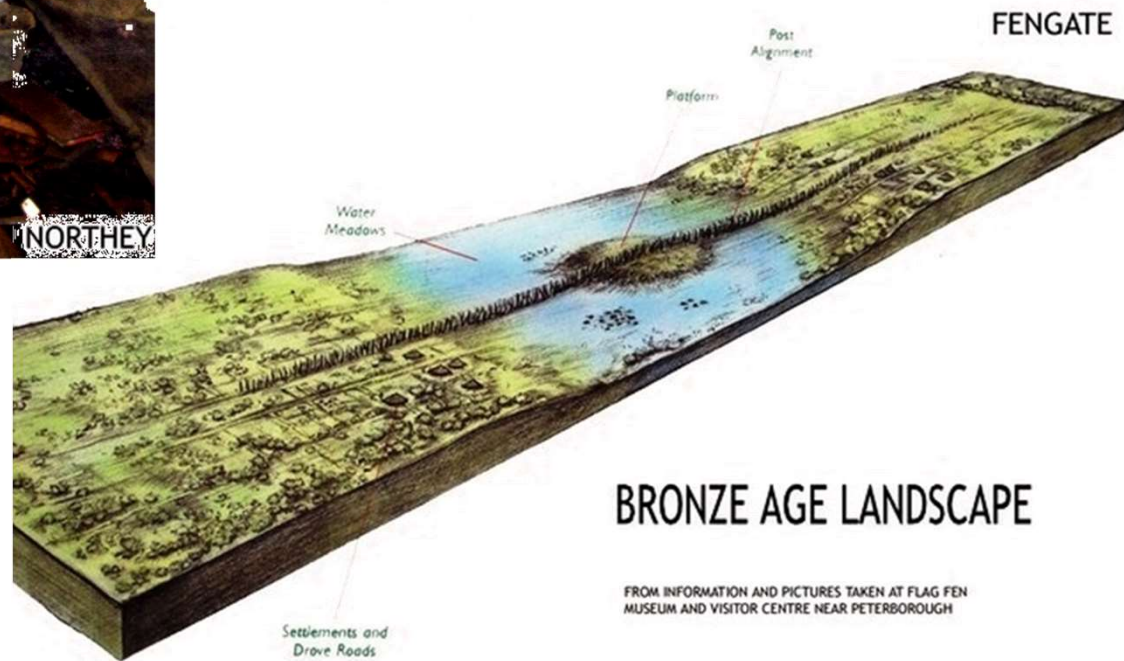


Omgeving PETERBOROUGH

Flag Fen en *Must Farm* liggen dicht bij elkaar, dateren uit de bronstijd en zijn verrassend rijk aan organisch materiaal in goed geconserveerde staat.



PETERBOROUGH *Flag Fen*



FROM INFORMATION AND PICTURES TAKEN AT FLAG FEN MUSEUM AND VISITOR CENTRE NEAR PETERBOROUGH

Vivacity Flag Fen



PARK KEY

- 1 Visitor Centre
- 2 Preservation Hall
- 3 Marker posts showing the Line of the Causeway
- 4 Bronze Age Settlement
- 5 Bronze Age Droeway
- 6 Arena
- 7 Arena Building
- 8 Fen Bog Garden

- 9 The Mere
- 10 Iron Age Reconstructed Roundhouse
- 11 The Roman Road
- 12 Roman Herb Garden
- 13 Museum
- 14 The Mustdyke
- 15 Must Farm Boats
- 16 Green Wheel Cycle Path

- Toilets
- Disabled Toilets
- Cafe
- Information Point
- Baby Changing
- Parking
- Picnic Area

— Suggested route around the site, following the ancient timeline starting with the Bronze Age and ending with the Romans

— Lakeside Walk

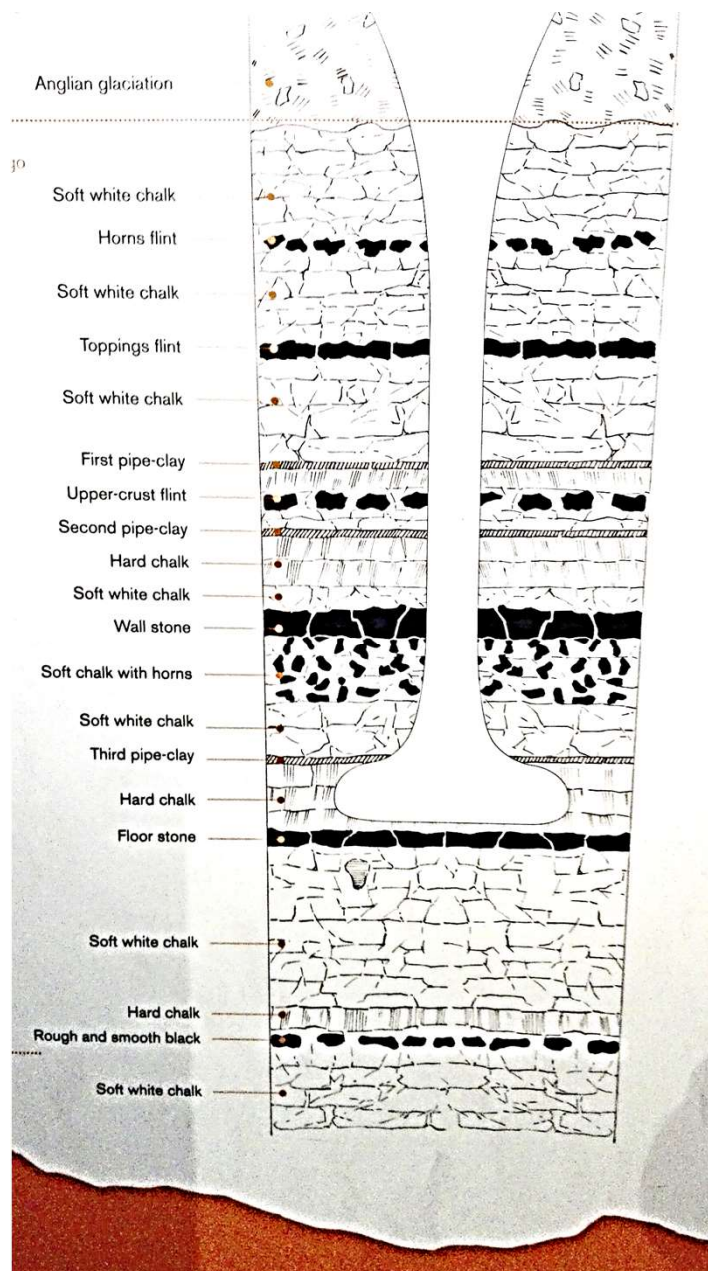
... Lines of the Causeway

vivacity-peterborough.com





THETFORD *Grime's Graves*
neolithische vuursteenmijn met bezoekerscentrum







Vrijdag 19 mei

Flag Fen + Must Farm
Grime's Graves

bronstijd neolithicum

Norwich

maphill

© 2011 Maphill

WELLS-NEAR-THE-SEA

Warham Camp

IJzertijd fort

(met een wandeling bereikbaar)





NORTH ELMHAM

kathedraal 11^{de} eeuw

kerk/kapel 12^{de} eeuw

versterkt huis 14^{de} eeuw



NORWICH CASTLE het museum van Norfolk



NORWICH museum Norwich Castle

- deel van grote keltische schatvondst SNETTISHAM
- oudste vuistbijl van Noordwest Europa (550-700 kA) HAPPISBURGH



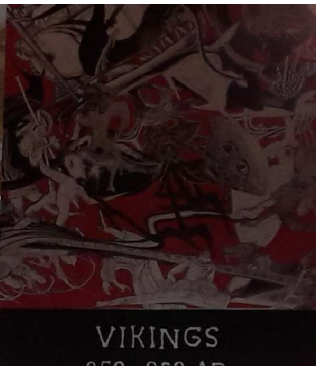
THE NEW ENGLISH
950 - 1066 AD



AN AGE OF KINGS
650 - 850 AD



MIGRATION
410 - 650 AD



VIKINGS
850 - 950 AD



A New...

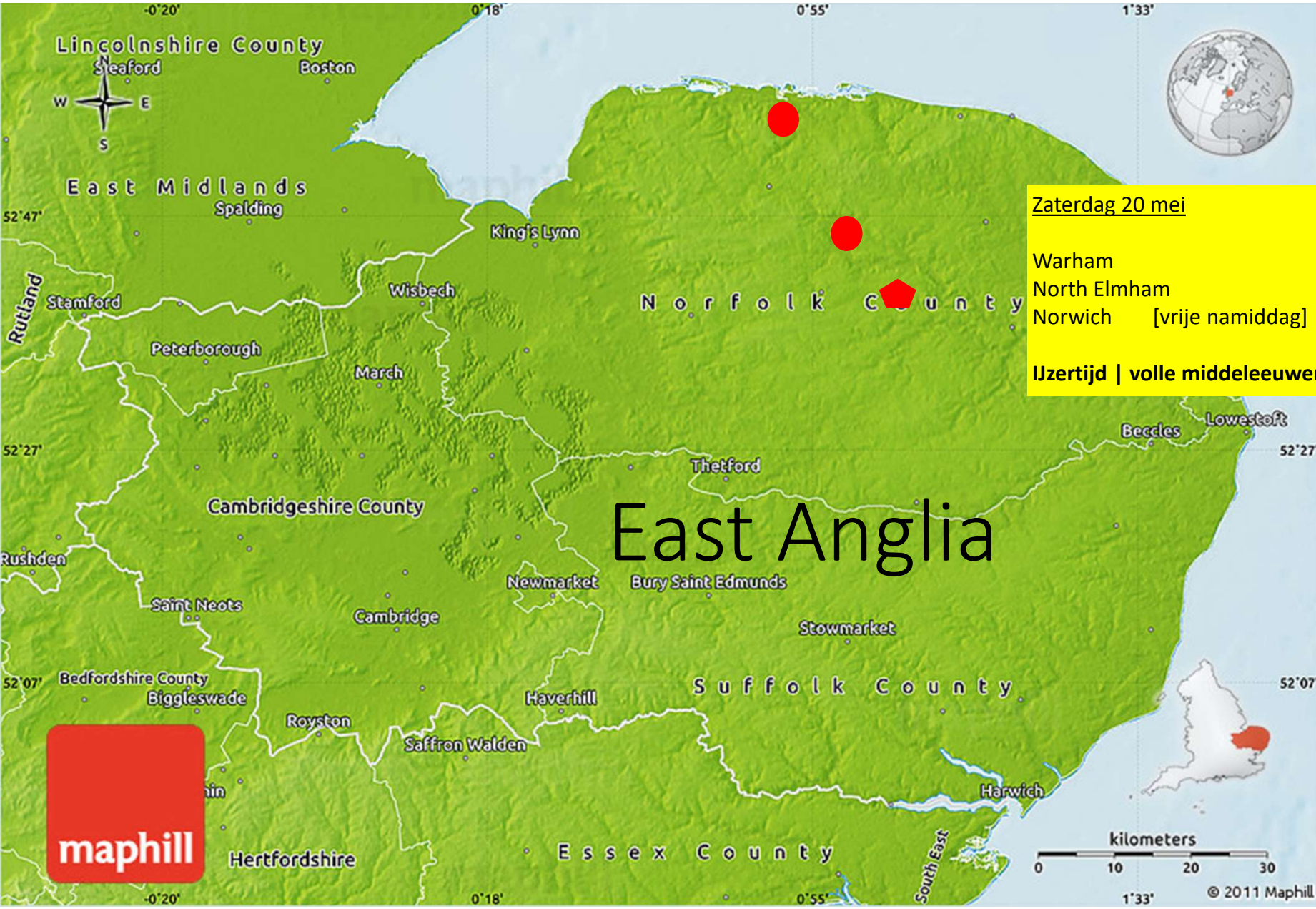
It is well known that...

in 800 AD the Vikings were...

The Passion of St Edmund

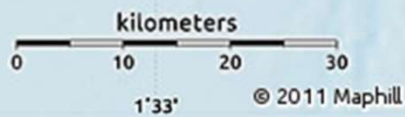
Edmund was the last King of East Angles...



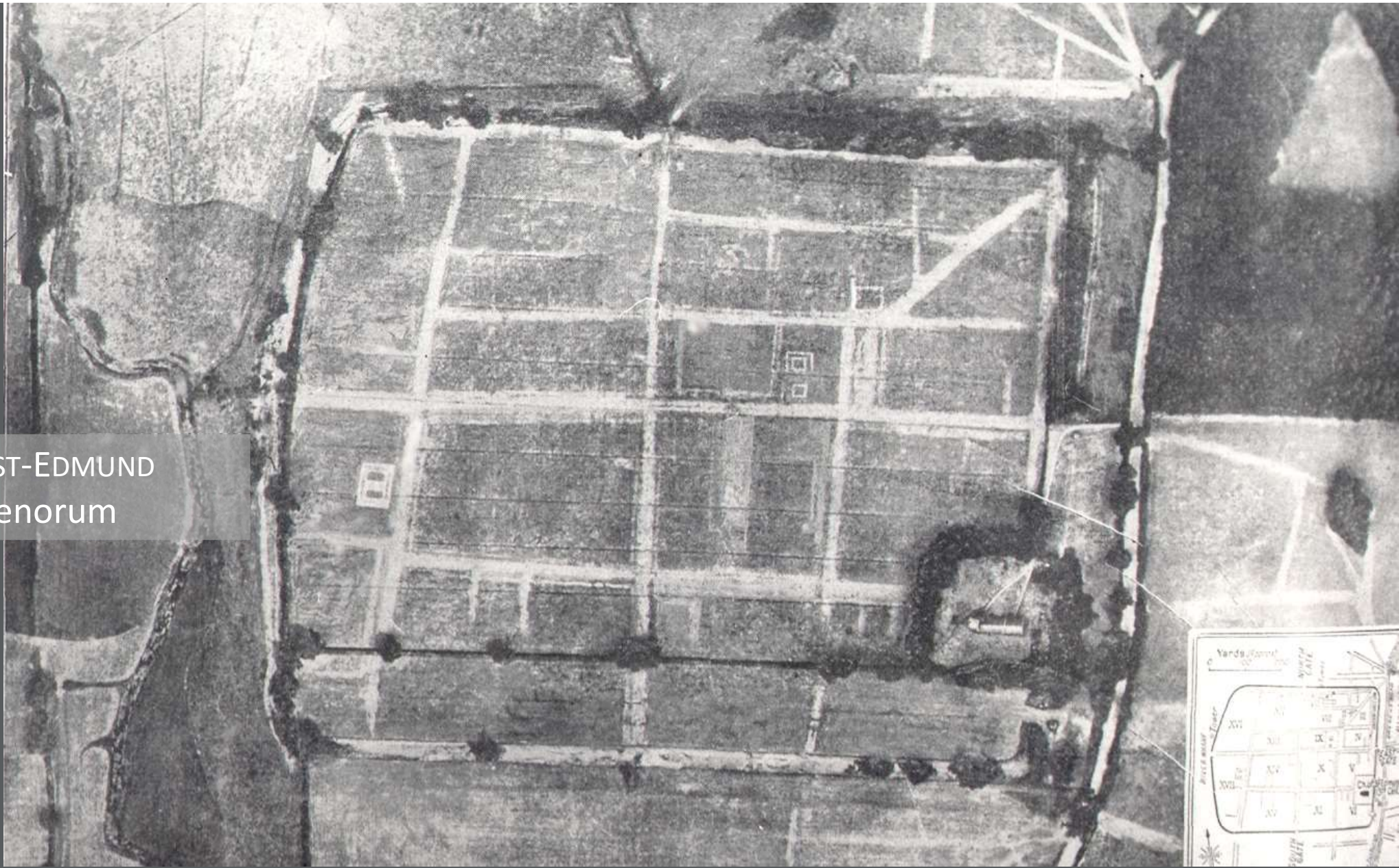


Zaterdag 20 mei
Warham
North Elmham
Norwich [vrije namiddag]
IJzertijd | volle middeleeuwen *Norwich*

East Anglia



CAISTOR-ST-EDMUND
Venta Icenorum

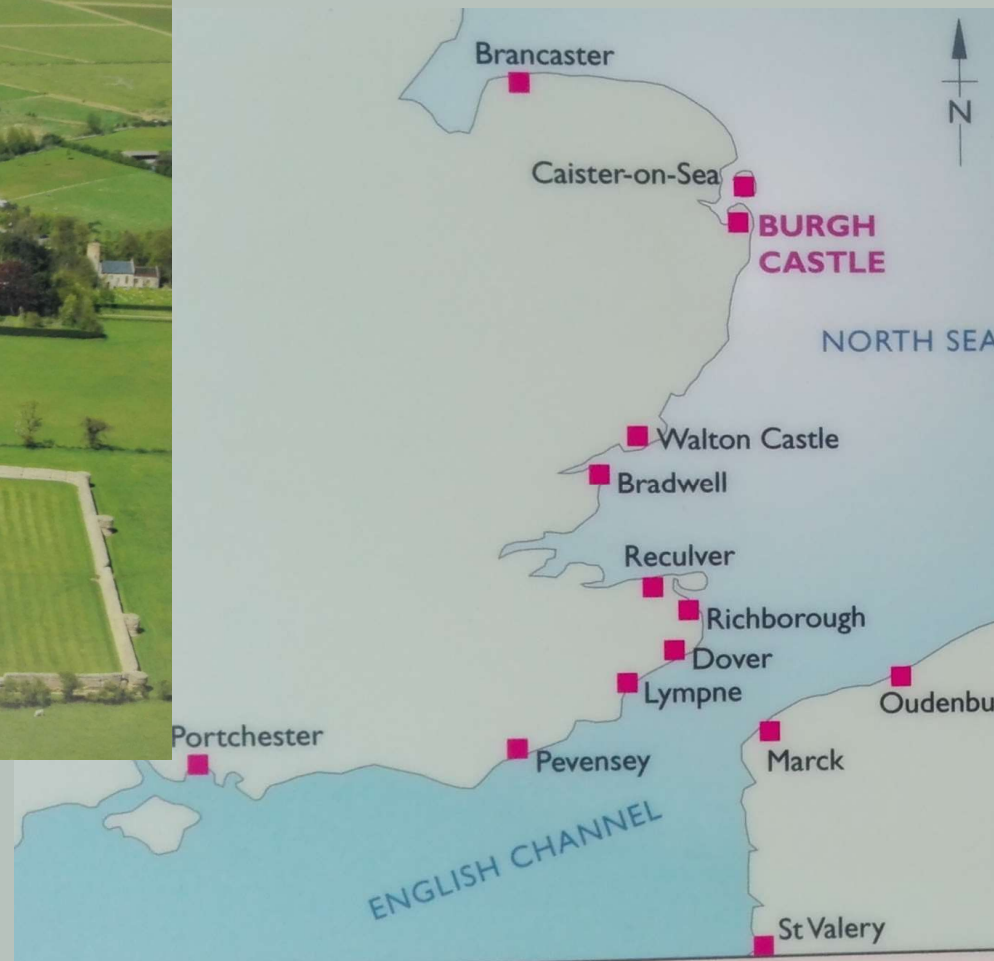


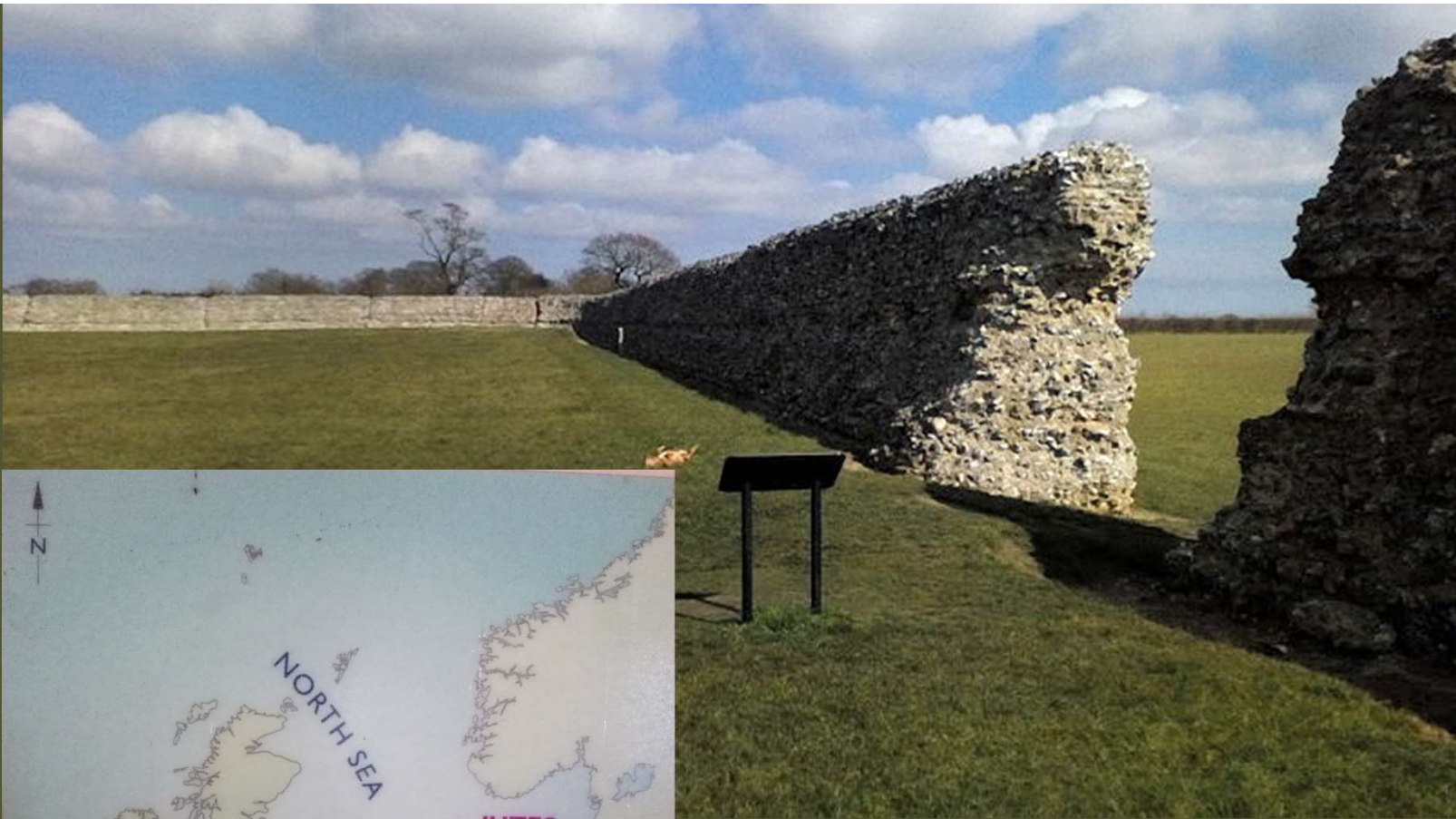




GREAT YARMOUTH *Burgh Castle*

laat romeins fort ter kustverdediging, zg. Saxon shore





The Royal Burial Ground

Mound 1
The Great Ship Burial
or The King's Mound.

Mound 2
Ship burial.

**Mounds 3, 4,
5, 6, 7 and 18**
Cremation burials.

**Mounds 8, 9,
10, 11, 12, 13 and 15**
Unexcavated mounds,
probably robbed.

Mound 14
The Queen's Mound.

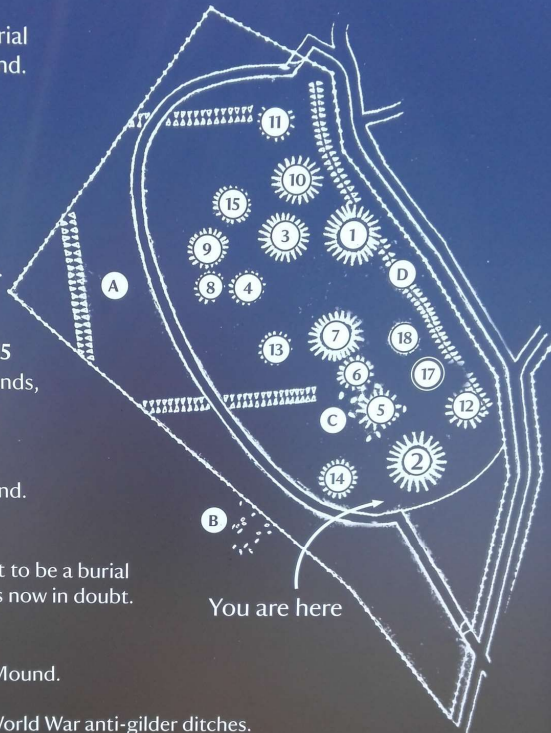
Mound 16
Originally thought to be a burial
mound, but this is now in doubt.

Mound 17
The Horseman's Mound.

Site A - Second World War anti-gilder ditches.

Sites B and C - Execution graves.

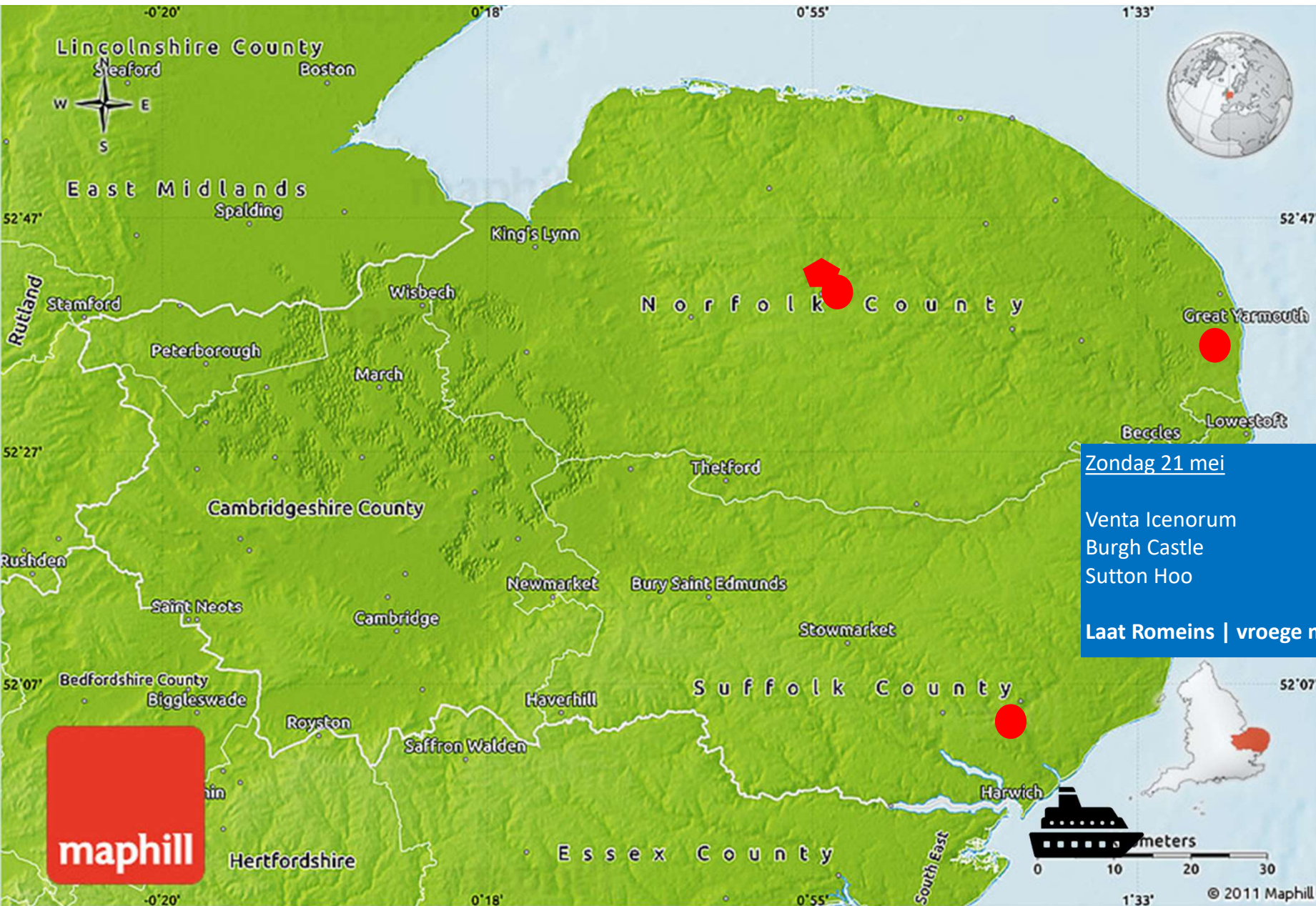
Site D - Medieval field boundary



SUTTON HOO Vroeg middeleeuws
vorstengraf (scheepsbijzetting) en grafveld
| bezoekerscentrum



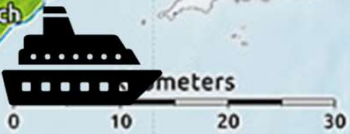




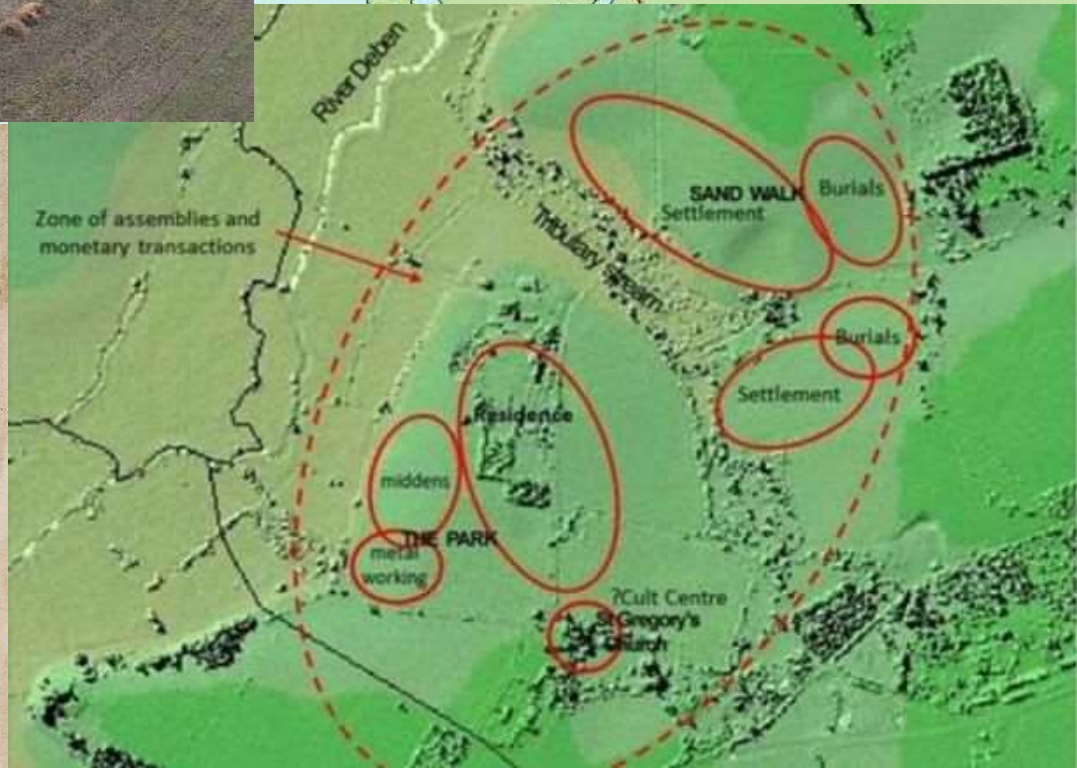
Zondag 21 mei

Venta Icenorum
Burgh Castle
Sutton Hoo

Laat Romeins | vroege middeleeuwen



© 2011 Maphill





Woensdag 17 mei

heenreis

Colchester 

Donderdag 18 mei

1 2 3 Colchester
4 Mersea
5 Bartlow Hills
Romeins

Norwich 

Vrijdag 19 mei

6 7 Flag Fen + Must Farm
8 Grime's Graves
bronstijd neolithicum

Norwich 

Zaterdag 20 mei

9 Warham
10 North Elmham
11 Norwich
IJzertijd | volle middeleeuwen

Norwich 

Zondag 21 mei

12 Venta Icenorum
13 Burgh Castle
14 Sutton Hoo
Laat Romeins | vroege middeleeuwen

nachtboot 



Maandag 22 mei

terugreis